

Mandarin Oriental Hotel Renovation

Bangkok, Thailand

Featured Installer:

Thai Her Chern Marble & Granite Co., Ltd.

General Contractor:

Task Interior Co., Ltd.

Featured Products:

- ARDEX CT 5 Commercial Tile Adhesive
- ARDEX DS 40 Impact Sound Reduction and Decoupling System

Challenges:

- Installing large, natural stone tiles on walls and floors in bedroom and restroom areas
- Installer and contractor education was necessary, as they were unfamiliar with ARDEX products

Situation:

Mandarin Oriental Hotel is considered the most prestigious and luxurious hotel in Bangkok city. Since its establishment in 1879, renovations occur with some frequency on a regular basis. This particular renovation included 30 rooms, had a duration of four months, and was completed in February, 2016.

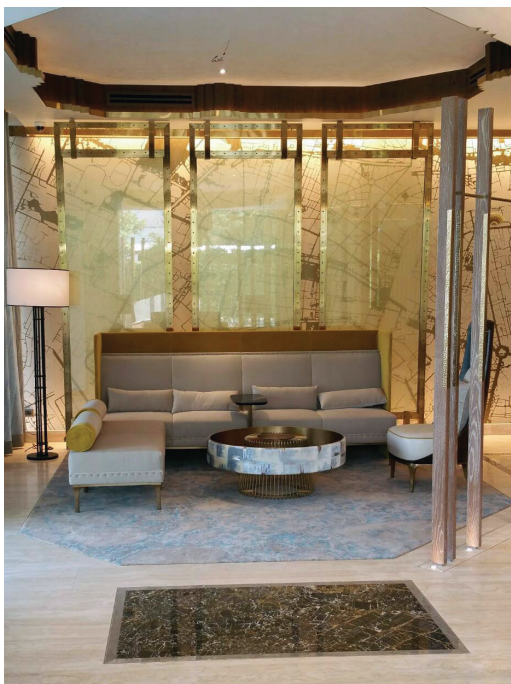
As a high-end 5-star hotel, the property was expected to be renovated according to the highest specification standard with premium products. Natural stone was chosen as the primary material to maximize the charm of hotel's modern interior design.

Task Interior Company, the contractor, also wished to install a high-performance soundproof system that can effectively reduce the sound and create the best atmosphere for hotel guests.

Solution:

ARDEX CT 5, a tile adhesive, was specified as a reliable solution for this project. In order to educate the installer, as well as exhibit the product's superior performance, a product demonstration was held. Satisfied that the product exceeded the others available in the Thai domestic market both in technical properties and ease of installation, the contractor used the adhesive throughout the project with great success.

ARDEX also proposed ARDEX DS 40, an Impact Sound Reduction and Decoupling System, to the General Contractor. In addition to their sound reduction properties, the pre-cut mats simplify installation and have excellent crack-bridging ability. ARDEX Singapore technical staff visited the job site to demonstrate correct installation procedures for ARDEX DS 40, and resulted in the mats being specified for the entire project. They were installed, where needed, for the entire renovation project with no difficulties.



Global Project Services
(GPS) Program

